



Terre des hommes

Helping children worldwide.



**539 523**

children and youth  
on the move  
supported in 2022  
by Tdh

**78**

projects  
implemented  
in  
31 countries

**187**

networks engaged  
on child rights in  
migration in which  
Tdh participate

©Tdh/Olivier Grand

## Theory of change

### Children and Youth on the Move

#### Context

Today, more than 281 million people are on the move around the world, including 36 million children. A vast majority have embarked in migration to escape oppressive and hopeless environments, limited resources, and opportunities. In addition to these numbers, there are those who are forcibly displaced, fleeing conflict, violence, persecution, or natural disasters. More than 60% of them are forcibly displaced within their own countries. Migration and asylum policies often do not facilitate the integration of these young people, who cannot access services and face a wide variety of risks in terms of human rights violations, exploitation, and separation from their family.

#### Goal

Tdh contributes to **reduce the vulnerability of children and youth on the move (CYM)**, ensure **respect for their rights** and **promote their development** through **education, empowerment, and integration/reintegration**.

#### Target Population

The Tdh CYM programme targets children and youth affected by mobility (0-24 years):

- Children and youth likely to engage in migration,
- Children and youth on the move on migration routes,
- Children and youth stranded during their migration journey,
- Children and youth left behind by their parents.

#### Added value and contribution to change

In order for the CYM to become actors in their protection, development and advocacy for the respect of their rights, Tdh focuses on the:

**Production of reliable and up-to-date information** on the migration contexts and needs of CYM

**Protective accompaniment:**

- providing individual and collective psychosocial support to CYM, enhancing their capacities for action and resilience,
- strengthening localized mechanisms along migration routes,
- acting at the level of institutional and community systems to better protect and integrate CYM.

**Strengthening the systems** and capacities of actors, to deploy accessible, adapted and quality services to CYM.

**Innovative and/or digital solutions** to support their empowerment.

## Differentiation approaches

### Innovation and ICT4D:

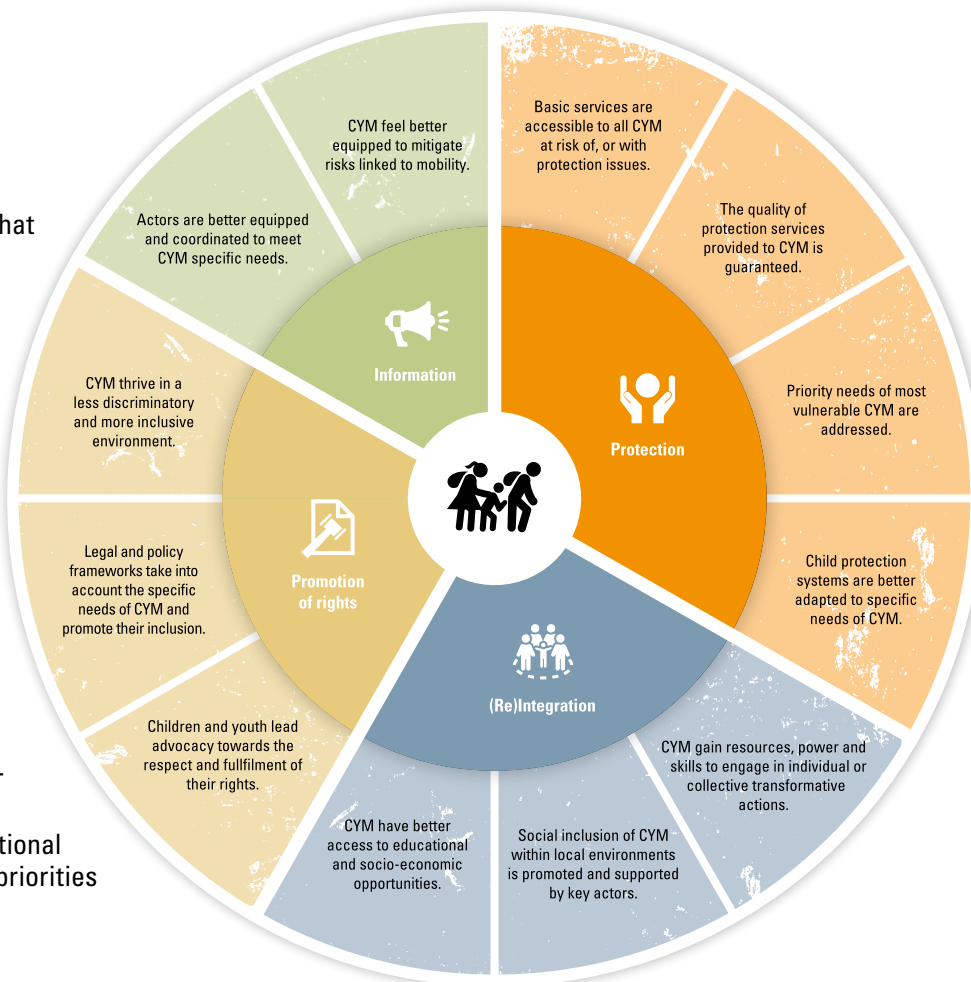
- Design and implement digital solutions that meet the needs and aspirations of CYM,
- Strengthen the resilience of children and youth on the move through the RIF model and free and secure access to a network of digitised spaces for protection, socialisation, learning and empowerment anchored in their local environment.

### Advocacy and empowerment:

- Enabling CYM to make their voices heard and to influence key actors to improve their living conditions and those of the communities.

### Partnership and localisation:

- Build local partnerships to ensure greater impact,
- Involve CYM, communities, local and national authorities in defining our orientations, priorities and learning processes.



## Multi-sectoral approach

### Migration and Health:

Improving access to essential, appropriate, and quality primary health care for children under 5 and pregnant women along the migration routes.

### Migration and access to justice:

Judicial protection and legal support of CYM in administrative detention, SGBV and trafficking child victims.

Strengthening social cohesion between migrants/refugees/displaced persons and host communities.

### Migration and Protection:

Development of tools and solutions adapted to the needs of migrants and refugees (quality of services, case management, strengthening of the social work system, ensuring access to MHPSS, support for child participation and empowerment, advocacy for the protection and promotion of children's rights).

### Migration and Wash/livelihood:

Improving the living conditions of migrant and displaced populations at all stages of the migration journey.

Support CYM to facing the risks of natural disasters linked to climate change.

## Alignment with institutional priorities

The CYM ToC is aligned with Tdh's institutional priorities:

### Nexus:

The programme intervenes in different contexts, providing immediate humanitarian assistance but also building the resilience of CYM and systems and addressing the root causes of migration crises.

### Climate change:

The programme strengthens the capacity of CYM and their communities to adapt to the adverse effects of climate change on their ecosystems and livelihoods.

### Gender and diversity:

The programme collects and analyses data on the intersecting factors of vulnerability between gender, diversity and mobility, in order to respond to specific needs, and to strengthen differentiated capacities and participation, with a view to transformation.

## Contact

For more information, please contact:

**Olivier Feneyrol** [olivier.feneyrol@tdh.org](mailto:olivier.feneyrol@tdh.org)

**Nina Marx** [nina.marx@tdh.org](mailto:nina.marx@tdh.org)



Siège | Hauptsitz | Sede | Headquarters  
Av. Montchoisi 15, CH-1006 Lausanne  
T +41 58 611 06 66, [info@tdh.org](mailto:info@tdh.org),  
[www.tdh.org](http://www.tdh.org), CH4109000000100115048

[www.tdh.ch](http://www.tdh.ch)  
[www.facebook.com/tdh.ch](https://www.facebook.com/tdh.ch)  
[www.twitter.com/tdh\\_ch](https://www.twitter.com/tdh_ch)  
[www.instagram.com/tdh\\_ch](https://www.instagram.com/tdh_ch)



**Terre des hommes**  
Helping children worldwide.